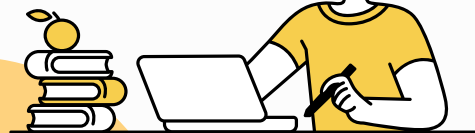


主催：島根県、しまね国際センター (SIC)

英語



SIC Japanese Language Course



Netto de Nihongo

FREE

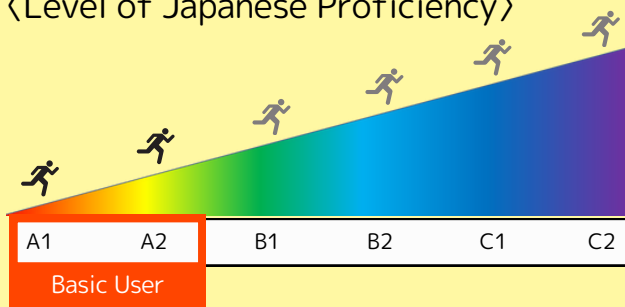
May to September 2025 Course

《Netto de Nihongo》 is...

APPLICATION PERIOD
2025 APRIL
4 (FRI) ~ 24 (THU)

- 1 ...a online Japanese course.
Participate from your computer or smartphone.
- 2 ...a course where you can learn hiragana, katakana, and essential Japanese phrases for your daily life.
- 3 ...offering four classes available at the A1 to A2 levels

〈Level of Japanese Proficiency〉



※Source:
The Japan Foundation "Irodori: Japanese for Life in Japan"

- A1
You can make greetings and communicate in a very simple way by using the expressions you have learned.
- A2
You can hold short, basic everyday conversations on familiar topics.

Thursday Class 1 THURSDAY...PM7:00~9:00

【Teaching Materials】

- Original Materials for Hiragana and Katakana
- The Japan Foundation "Irodori: Japanese for Life in Japan Starter (A1)" Lesson 1-8

The Japan Foundation "Irodori: Japanese for Life in Japan Starter (A1)" can be viewed from here

【English】 <https://www.irodori.jpf.go.jp/en/starter/pdf.html>

【Other Languages】 <https://www.irodori.jpf.go.jp/en/editions.html>



※1st Level check - 30th Apr (Wednesday) AM9:00-12:00 or 1st May (Thursday) PM6:00-9:00		
① 8th May (Thursday) Hiragana(1) Starting to Speak Japanese(1)	② 15th May (Thursday) Hiragana(2) Starting to Speak Japanese(2)	③ 22nd May (Thursday) Hiragana(3) Starting to Speak Japanese(3)
④ 29th May (Thursday) Hiragana(4) About Myself(1)	⑤ 5th June (Thursday) Katakana(1) About Myself(2)	⑥ 12th June (Thursday) Katakana(2) About Myself(3)
⑦ 19th June (Thursday) Katakana(3) My Favorite Foods(1)	⑧ 26th June (Thursday) Katakana(4) My Favorite Foods(2)	⑨ 3rd July (Thursday) My Favorite Foods(3)
⑩ 10th July (Thursday) Homes and Workplaces(1)	⑪ 17th July (Thursday) Homes and Workplaces(2)	⑫ 24th July (Thursday) Homes and Workplaces(3)
⑬ 31st July (Thursday) Homes and Workplaces(4)	⑭ 7th August (Thursday) Review	⑮ 21st August (Thursday) 2nd Level check

※Schedule and content might change

Wednesday Class 2 WEDNESDAY...AM10:00~12:00

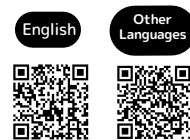
【Teaching Materials】

- The Japan Foundation "Irodori: Japanese for Life in Japan Starter (A1)" Lesson 9-18

The Japan Foundation "Irodori: Japanese for Life in Japan Starter (A1)" can be viewed from here

【English】 <https://www.irodori.jpf.go.jp/en/starter/pdf.html>

【Other Languages】 <https://www.irodori.jpf.go.jp/en/editions.html>



※ 1st Level check - 30th Apr (Wednesday) AM9:00-12:00 or 1st May (Thursday) PM6:00-9:00			
① 7th May (Wednesday) Daily Life(1)	② 14th May (Wednesday) Daily Life(2)	③ 21st May (Wednesday) Daily Life(3)	④ 28th May (Wednesday) What I Like to Do(1)
⑤ 4th June (Wednesday) What I Like to Do(2)	⑥ 11th June (Wednesday) What I Like to Do(3)	⑦ 18th June (Wednesday) Walking around Town(1)	⑧ 25th June (Wednesday) Walking around Town(2)
⑨ 2nd July (Wednesday) Walking around Town(3)	⑩ 9th July (Wednesday) Walking around Town(4)	⑪ 16th July (Wednesday) At Stores(1)	⑫ 23rd July (Wednesday) At Stores(2)
⑬ 30th July (Wednesday) At Stores(3)	⑭ 6th August (Wednesday) At Stores(4)	⑮ 20th August (Wednesday) Holidays(1)	⑯ 27th August (Wednesday) Holidays(2)
⑰ 3rd Sept (Wednesday) Holidays(3)	⑱ 10th Sept (Wednesday) Holidays(4)	⑲ 17th Sept (Wednesday) Review	⑳ 24th Sept (Wednesday) 2nd Level check

※Schedule and content might change

Thursday Class 3 THURSDAY...PM7:00~9:00

【Teaching Materials】

- The Japan Foundation "Irodori: Japanese for Life in Japan Elementary 1 (A2) " Lesson 1-10

The Japan Foundation "Irodori: Japanese for Life in Japan Elementary 1 (A2)" can be viewed from here

【English】 <https://www.irodori.jpf.go.jp/en/elementary01/pdf.html>

【Other Languages】 <https://www.irodori.jpf.go.jp/en/editions.html>

English

Other Languages



※ 1st Level check - 30th Apr (Wednesday) AM9:00-12:00 or 1st May (Thursday) PM6:00-9:00

① 8th May (Thursday) My Current Self(1)	② 15th May (Thursday) My Current Self(2)	③ 22nd May (Thursday) My Current Self(3)	④ 29th May (Thursday) My Current Self(4)
⑤ 5th June (Thursday) Seasons and Weather(1)	⑥ 12th June (Thursday) Seasons and Weather(2)	⑦ 19th June (Thursday) Seasons and Weather(3)	⑧ 26th June (Thursday) My Town(1)
⑨ 3rd July (Thursday) My Town(2)	⑩ 10th July (Thursday) My Town(3)	⑪ 17th July (Thursday) My Town(4)	⑫ 24th July (Thursday) Going Out Together(1)
⑬ 31st July (Thursday) Going Out Together(2)	⑭ 7th August (Thursday) Going Out Together(3)	⑮ 21st August (Thursday) Going Out Together(4)	⑯ 28th August (Thursday) Studying Japanese(1)
⑰ 4th Sept (Thursday) Studying Japanese(2)	⑱ 11th Sept (Thursday) Studying Japanese(3)	⑲ 18th Sept (Thursday) Review	⑳ 25th Sept (Thursday) 2nd Level check

※Schedule and content might change

Wednesday Class 4 WEDESDAY...AM10:00~12:00

【Teaching Materials】

- The Japan Foundation "Irodori: Japanese for Life in Japan Elementary 1 (A2)" Lesson 11 -18

The Japan Foundation "Irodori: Japanese for Life in Japan Elementary 1 (A2)" can be viewed from here

【English】 <https://www.irodori.jpf.go.jp/en/elementary01/pdf.html>

【Other Languages】 <https://www.irodori.jpf.go.jp/en/editions.html>

English

Other Languages



※ 1st Level check - 30th Apr (Wednesday) AM9:00-12:00 or 1st May (Thursday) PM6:00-9:00

① 7th May (Wenesday) Delicious Dishes(1)	② 14th May (Wenesday) Delicious Dishes(2)	③ 21st May (Wenesday) Delicious Dishes(3)	④ 28th May (Wenesday) Review
⑤ 4th June (Wenesday) Communication at Work(1)	⑥ 11th June (Wenesday) Communication at Work(2)	⑦ 18th June (Wenesday) Communication at Work(3)	⑧ 25th June (Wenesday) Communication at Work(4)
⑨ 2nd July (Wednesday) Review	⑩ 9th July (Wednesday) Healthy Life(1)	⑪ 16th July (Wednesday) Healthy Life(2)	⑫ 23rd July (Wednesday) Healthy Life(3)
⑬ 30th July (Wednesday) Healthy Life(4)	⑭ 6th August (Wednesday) Review	⑮ 20th August (Wednesday) Personal Relationships(1)	⑯ 27th August (Wednesday) Personal Relationships(2)
⑰ 3rd Sept (Wednesday) Personal Relationships(3)	⑱ 10th Sept (Wednesday) Personal Relationships(4)	⑲ 17th Sept (Wednesday) Review	⑳ 24th Sept (Wednesday) 2nd level check

※Schedule and content might change



Feedback from participants

※From 'Netto de Nihongo' online survey



- "I learnt words and phrases frequently used in daily life. Now, I can communicate in Japanese more effectively by using the words I've learned."
(From Brazil, living in Izumo City)
- "Online learning was very convenient. The teachers supported our learning in various ways."
(From China, living in Matsue City)
- "This program was really engaging, and despite not knowing Japanese previously, I put in a lot of effort and managed to make significant progress. Thanks to the teachers' explanations, I gained a better understanding of Japanese, and I also learned about various aspects of daily life."
(From the Philippines, living in Izumo City)
- "This course was truly wonderful. After each class, I gradually became better at speaking and gained a bit of confidence."
(From Brazil, living in Izumo City)



If you would like to participate, please read numbers 1 to 9 before apply.

1. Application Period: 4th April, 2025 (Friday) to 24th April, 2025 (Thursday)
2. Study online. Please prepare your necessary items such as smartphones, computers, and internet connection.
3. Textbook will be sent by mail from Shimane International Center.
4. Study in class format.
5. Wednesday class 1: up to 15 participants. Other classes: up to 12 participants.
6. Applications can be made by the following individuals: ① and ②.
 - ① Those who live in Shimane prefecture or those who work in Shimane prefecture.
 - ② 16 years old or older
7. Before the class starts, we will do a level check. **MUST attend.**
8. On the last day of each class, we will have a level check to make sure you have mastered what you have studied.
9. Those who want to apply, please apply using either method ① or ②.
 - ① Application Form (Microsoft Forms)
URL: <https://forms.office.com/r/rxg03cYKGU>



- ② E-mail
(Please write the following 1 to 9 and send it by e-mail)
Subject: Applying for Netto de Nihongo
1 - name 2 - email address 3 - phone number (if any)
4 - country 5 - native language 6 - address
7 - Classes you would like to enroll
8 - device to use (smartphone, tablet, computer)
9 - The date you can take the test (30 Apr or 1 May)

Information • Application

Shimane International Center

✉ sic-nihongo2@sic-info.org

📞 070-3774-9329 (Multilingual)

📞 0852-31-5056 (Japanese)

🌐 <https://www.sic-info.org/en/>